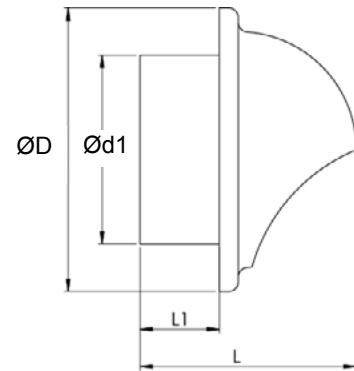


WSGRKE



WSGRKEG

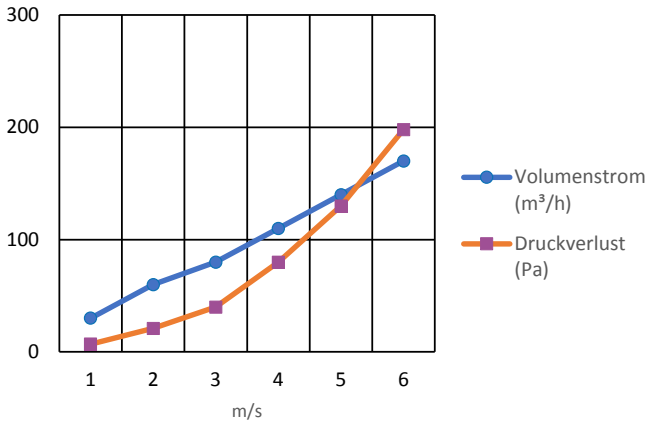


WSGRKE / WSGRKEG:

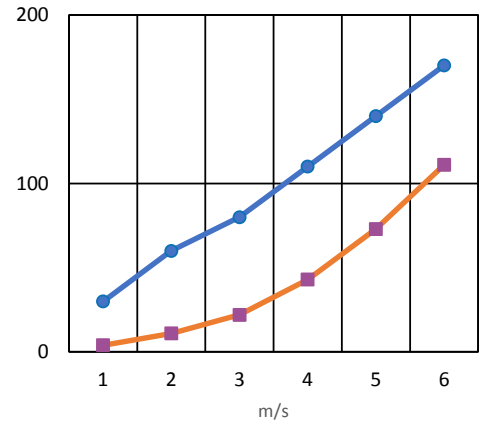
Kugelwetterschutzgitter sind Zu- und Abluftdurchlässe für die Wandmontage im Außenbereich, Anschlussstutzen mit Klemmlaschen zur besseren Befestigung
Inklusive 2x Schrauben zur Befestigung, Gummidichtband und Klemmlasche
Werkstoff: Edelstahl V2A 1.4301.

| Ød1 | ØD | L | L1 | Gewicht ~ |
|------|------|------|------|-----------|
| (mm) | (mm) | (mm) | (mm) | (kg) |
| 100 | 150 | 115 | 42 | 0,16 |
| 125 | 190 | 145 | 48 | 0,25 |
| 150 | 210 | 155 | 55 | 0,35 |
| 160 | 210 | 165 | 55 | 0,35 |
| 180 | 230 | 185 | 60 | 0,70 |
| 200 | 253 | 205 | 62 | 0,93 |

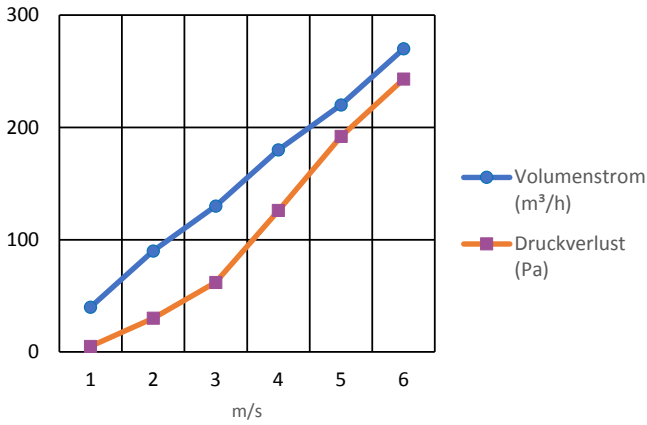
WSGRKE Ø100



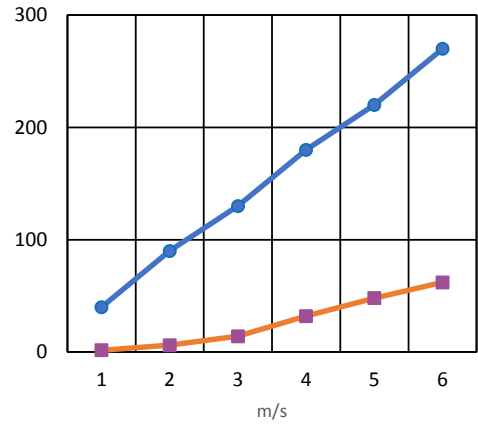
WSGRKEG Ø100



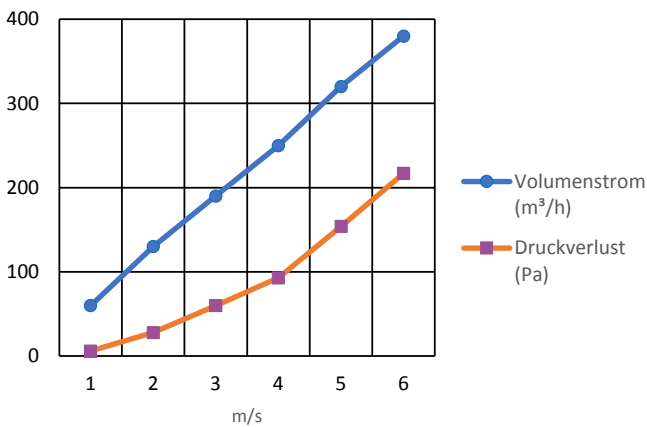
WSGRKE Ø125



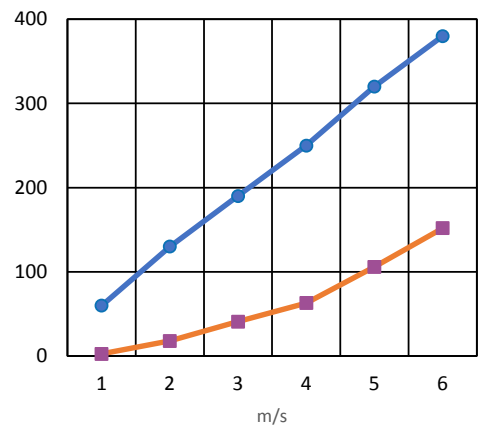
WSGRKEG Ø125



WSGRKE Ø150

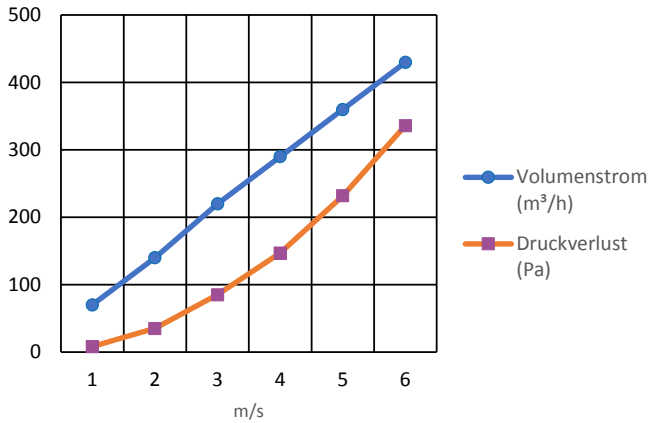


WSGRKEG Ø150

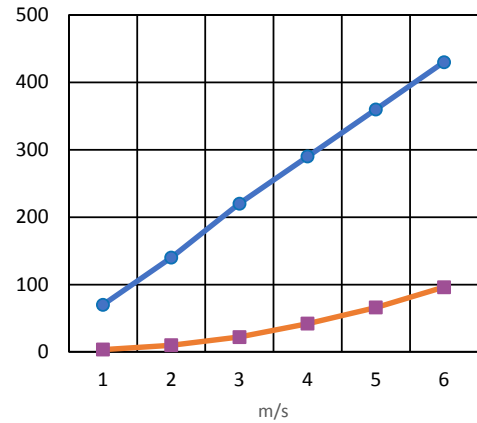


vent

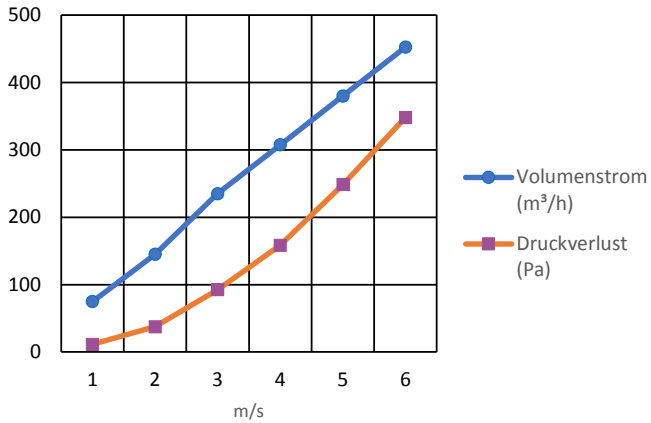
WSGRKE Ø160



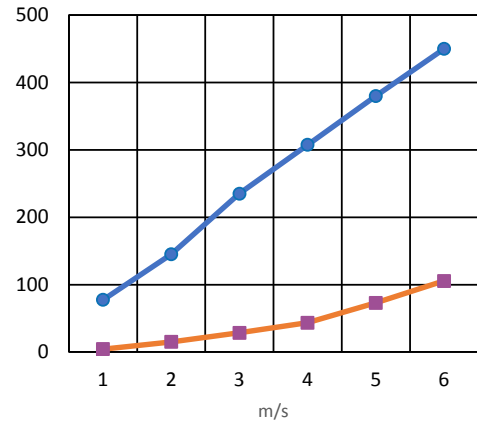
WSGRKEG Ø160



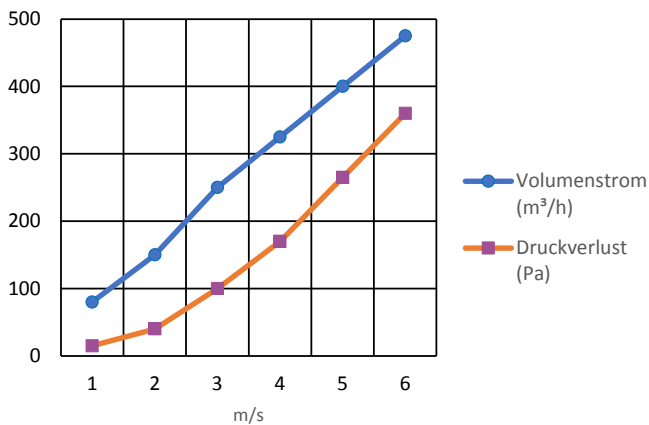
WSGRKE Ø180



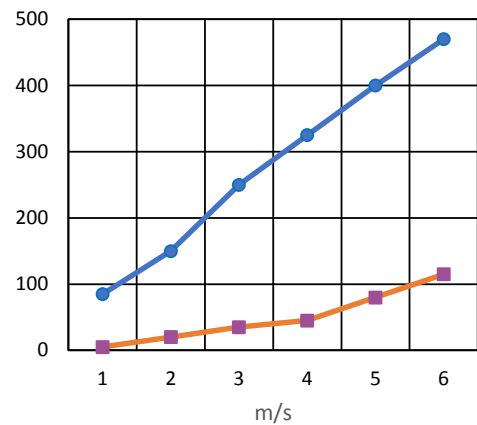
WSGRKEG Ø180



WSGRKE Ø200



WSGRKEG Ø200



vent

8